

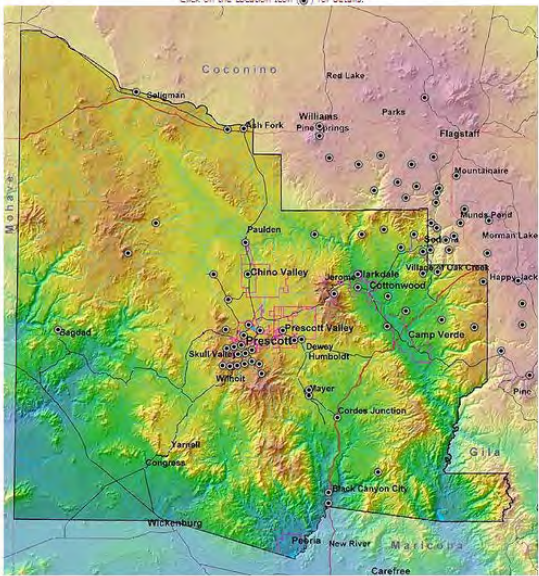
Building Enhanced Situational Awareness and Public Data Dissemination into Yavapai County's Flood Detection Program



ALERT Users Group
Reno, Nevada
May 7, 2014

Station Location Map

Click on the Location Icon (📍) for details.



Copyright © 2013 Yavapai County Government

Synopsis

- Project Background
- Demonstrate Interface

and Reports



Station Information



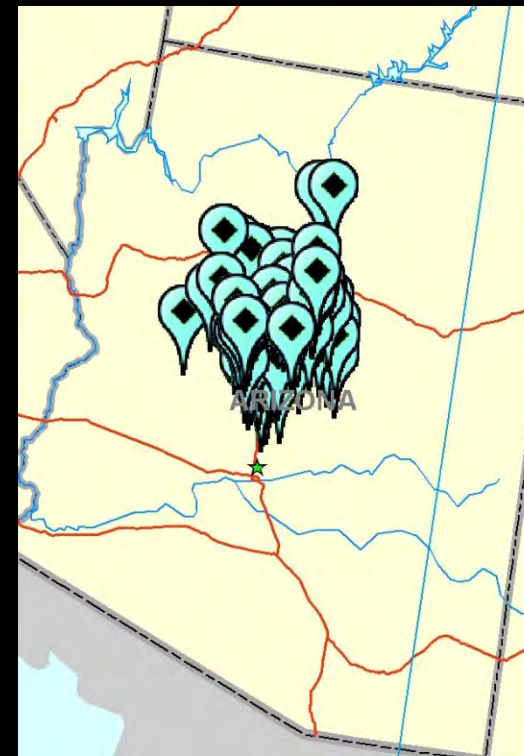
TEXT LISTING

147	Sedona Airport
148	Pumphouse Wash
150	Sedona Airport
151	Sedona Airport
152	Sedona Airport
153	West Fork Oak Creek
155	West Fork Oak Creek
158	Oak Creek @ Tlaquepaque
160	Oak Creek @ Tlaquepaque
163	ADOT Rim Camp-165
165	Schnebly Hill

Copyright © 2013 Yavapai County Government



Background

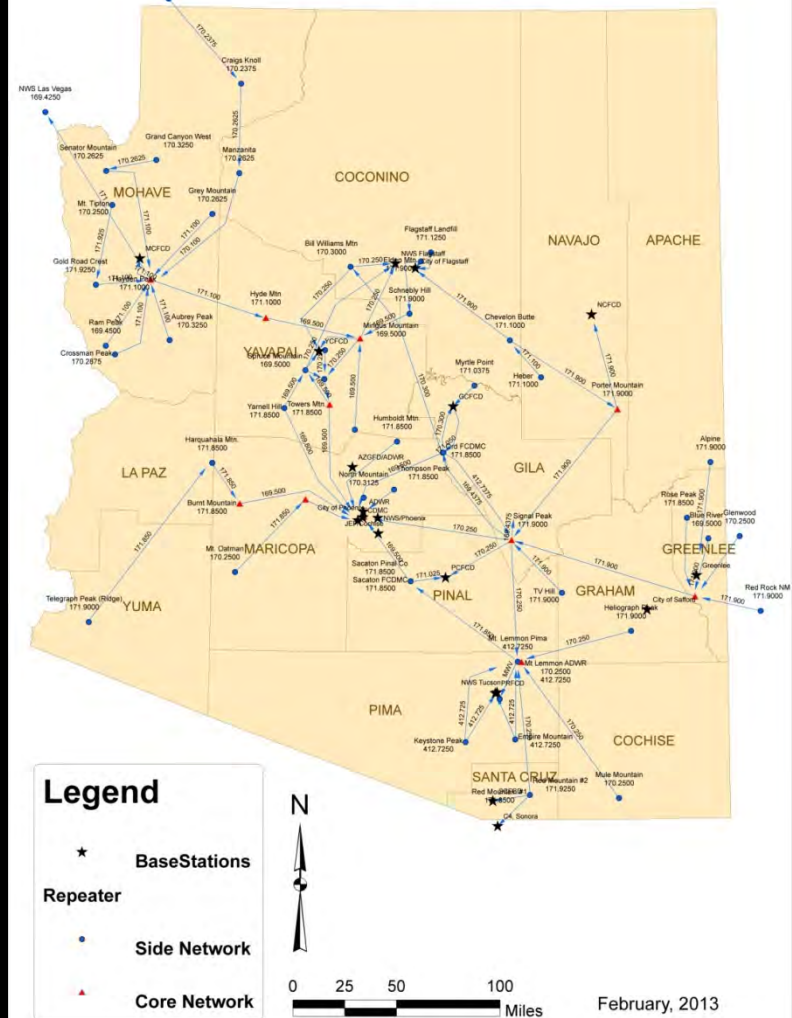


Background



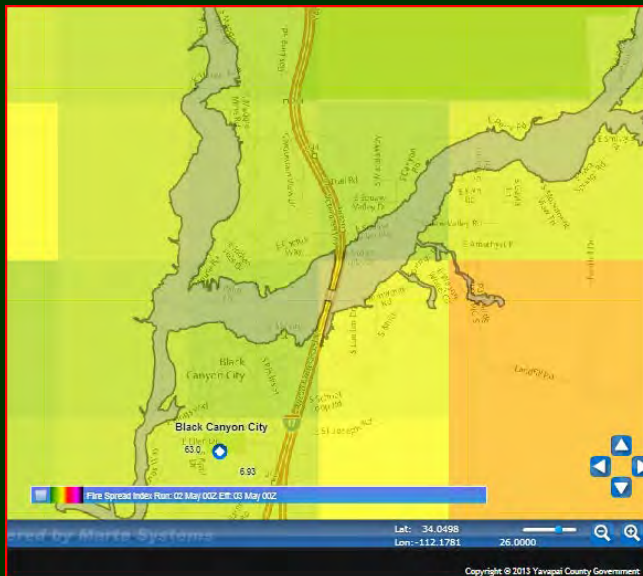
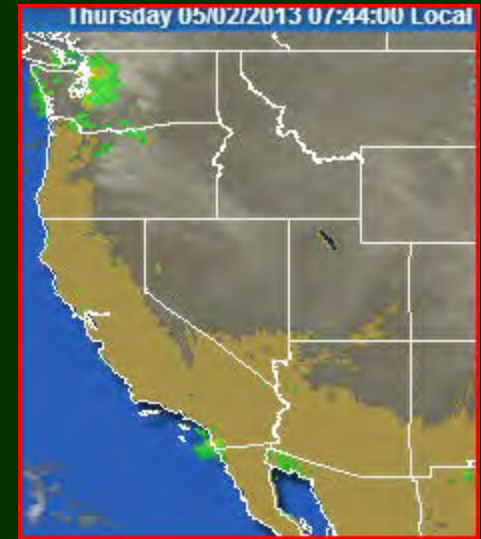
Schnebly Hill Repeater

Arizona ALERT Repeaters & Base Stations



Project Purpose

- Provide public access to real-time data
- Increase ease of access for all users
- Increase situational awareness for decision support
- Decrease reliance on weak infrastructure



Main Public Access

YCFlood

WordPress
MySQL
HTTP/HTTPS
IIS

<http://www.ycflood.com/>
and sub-pages...

YCFlood/Weather Server (Win Srvr 2008R2)
(Virtual Server -10.33.5.59)
(NTDMZFLDALERT)
(Public IP Address = 63.230.246.74:8081)
Hyper V Host 1 (secondary mirror Hyper V 2)

Microsoft IIS (10.33.5.59:80)

Yosemite Cloud

WordPress Website (10.33.5.59:80)

GeoServer (10.33.5.59:8080)

File Geodatabase (WFS)

MySQL (port 3307) running databases for:
WordPress, DataWise and Yosemite Cloud

PHP (v5.3.14)

Apache2.2 httpd Service (10.33.5.59:8081)

DataWise Direct ALERT Database Query
(10.33.5.59:8081)

Yosemite Client-Server Internal Ports (Firewall opening not required)

MartaService to YosemiteViewer:	Ports 1778 and 27770 through 27777
MartaService to MartaAdmin	Ports 1778 and 27771
MartaService to Alarm	Ports 1778 and 27771

Yosemite & NWS Software Update FTP Server – OPEN THESE IN YOUR FIREWALL

yosemite.martasystems.com	69.36.84.80	FTP ports 20 and 21
ftp://tgftp.nws.noaa.gov		FTP ports 20 and 21

TCP 1777 SKYTAP

Marta Skytap Weather Service – OPEN THESE IN YOUR FIREWALL

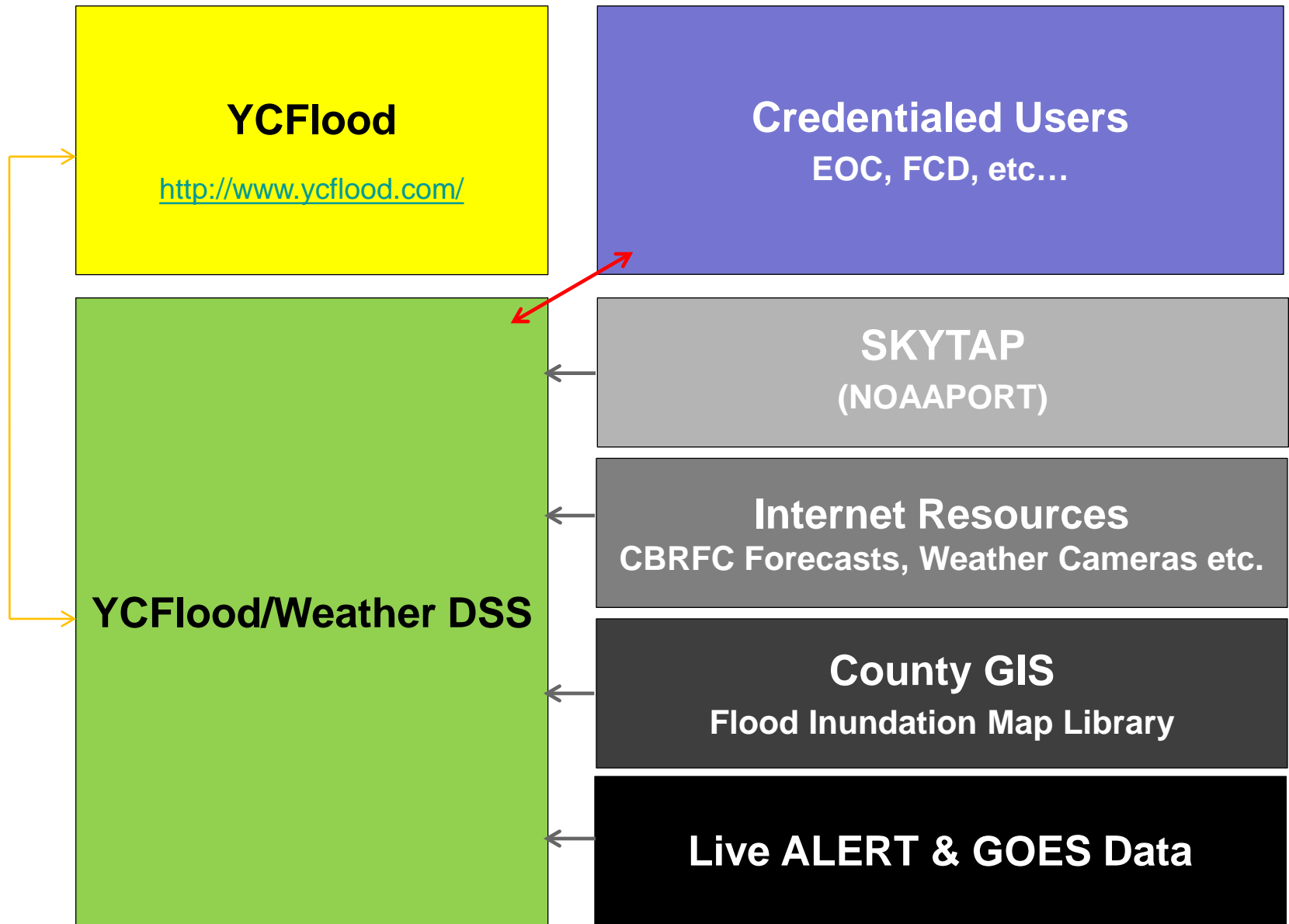
skytap1.martasystems.com	65.160.124.5	Primary Port 1777	Secondary Port 1450
skytap2.martasystems.com	65.160.124.6	Primary Port 1777	Secondary Port 1450
skytap3.martasystems.com	65.160.124.7	Primary Port 1777	Secondary Port 1450
ys1.martasystems.com	69.36.84.69	Primary Port 1777	Secondary Port 1450
ys2.martasystems.com	174.34.77.72	Primary Port 1777	Secondary Port 1450
ys3.martasystems.com	69.36.84.71	Primary Port 1777	Secondary Port 1450
ys4.martasystems.com	174.34.77.71	Primary Port 1777	Secondary Port 1450

**County GIS/ESRI/Shapes
Flood Inundation Maps**

**Intranet (county LAN) users have full access
EOC, FCD, etc...**

**DataWise 7 Workstation with Live ALERT Data Feed
FLD3014-93-T94M1 (10.48.86.162)
Outbound data socket connection to 10.33.5.59**





YCFlood

<http://www.ycflood.com/>

Credentialed Users

EOC, FCD, etc...

SKYTAP (NOAAPORT)

Internet Resources

CBRFC Forecasts, Weather Cameras etc.

County GIS

Flood Inundation Map Library

Live ALERT & GOES Data

YCFlood/Weather DSS

Yavapai County ALERT System

<http://weather.ycflood.com>

Arizona Flood Warning System

<http://wp.afws2.org/>

JE Fuller/Hydrology & Geomorphology,
Inc. ALERT Data Pages

<http://www.jefullerdata.com/>



Dan Cherry, P.E.


dan.cherry@yavapai.us



Brian Iserman, P.E., CFM

brian@jefuller.com

twitter  /floodwarn

in  /brianiserman

